

AMHERST EARLY MUSIC WINTER WEEKEND WORKSHOP January 12-15, 2018

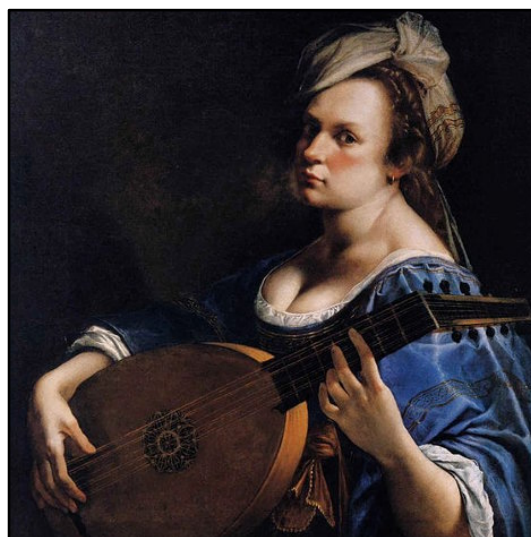
in Historic Philadelphia & Rutgers-Camden
Directed by Heather Miller Lardin

Terpsichore... follow your inner muse!

Start the new year with music and dance. The 2018 Winter Weekend Workshop will be full of inspiring sounds and ideas: Medieval Carols, DuFay's Songbook, Terpsichore, Strozzi madrigals, and more.

Recorder ensembles, viol consorts, masterclasses, oboe band, Baroque orchestra, string ensemble, historical dance, Renaissance reeds, and early notation are all on the menu.

Class list available at amherstearlymusic.org in December. Sign up early, some classes will close Jan. 8. The Von Huene Workshop will be in residence with music and instruments for sale. Stop by and browse.



SPECIAL PROJECTS

Barbara Strozzi ~ *La Virtuossissima* Project for Voices and Lutes **Julianne Baird** and **Richard Stone** directors

Barbara Strozzi Madrigals Book 1 (1644) for 2, 3, 4 and 5 voices and continuo. Intensive workshop of one-on-a-part singing and lute continuo ensemble with music by one of the seicento's finest composers. Vocalists will coach and perform a small-forces (2-3 voices) and large-forces (4-5 voices) madrigal each. Lutenists will accompany with a focus on ensemble and gesture. Limited to 10 singers. Audition for singers, by December 1. See website for details.

Terpsichore Suite from G.F. Handel's *Il Pastor Fido*

Baroque Orchestra **Cynthia Roberts** and **Gwyn Roberts** directors For strings, flute, oboe, recorder, bassoon, harpsichord. Colorful dance suite from a beloved masterwork. A=415. No audition necessary.

NEW! Viol Intensive on J.S. Bach's solo literature with **Sarah Cunningham** Solo music from the Passions, sonatas for viola da gamba and harpsichord, and ensemble music. By audition or with instructor's permission.

Harpsichord Studio with **Adam Pearl** and **Leon Schelhase** Keyboard students focus on solo and continuo playing. Opportunities to play in orchestra and Baroque ensembles. By permission of instructor. New students please submit a letter from a teacher describing continuo skills and experience.

La bourée de Mlle. Charollois, La Menuet et La Contredance Baroque Dance Project **Dorothy Olsson** and **Kaspar D. Mainz** directors Pécour's charming duet, with music from Lully's *Isis* (1677), will be taught from notation and performed with live music.

FACULTY

John Bailey *harpsichord*
Julianne Baird *voice*
Rainer Beckmann *recorder*
Marilyn Boenau *Baroque bassoon*
Renaissance reeds
Geoffrey Burgess *Baroque oboe*
Sarah Cunningham *viol*
Donna Fournier *viol*
Eric Haas *recorder*
Valerie Horst *recorder, early notation*
Joan Kimball *recorder, Renaissance reeds*
Kaspar D. Mainz *Baroque dance*
Alison Melville *recorder*
Sally Merriman *Baroque bassoon*
Heather Miller Lardin *viol, double bass*
Dorothy Olsson *Baroque dance*
Adam Pearl *harpsichord*
Wendy Powers *recorder*
Mark Rimple *lute, voice*
Gwyn Roberts *Baroque flute, recorder*
Cynthia Roberts *violin*
Leon Schelhase *harpsichord*
Richard Stone *lute, theorbo*
Alastair Thompson *harpsichord*
Allen Whear *cello*

Amherst Early Music
35 Webster Street
West Newton, MA 02465
(781) 488-3337

Winter Weekend Workshop

January 12-15, 2018

in Historic Philadelphia and Rutgers ~ Camden

Non-Profit Org.
U.S. Postage
PAID
Brockton, MA
Permit No. 1000

See you there!



Winter Weekend Workshop 2018



Friday, January 12

4:00-6:00 p.m. Workshop check-in, lobby of the Franklin Hotel.

7:30 p.m. Concert: aMuse Consort, *Flow my Tears*, St. Stephens Church

Saturday, January 13

Classes 9:00 to 4:30

Sunday, January 14

Classes 9:00 to 4:30

8:00 p.m. Faculty Concert. Old Pine Street Church, 412 Pine Street

Monday, January 15

Classes 9:00 to 12:00

12:30 p.m. Workshop Special Projects Concert featuring Voices and Lutes, Baroque Orchestra, and the Baroque Dance Projects.

amherstearlymusic.org

GENERAL INFORMATION

CLASSES All classes will be held at the Fine Arts Building, Rutgers University Camden. Van service will be provided between the Omni and Rutgers.

HOUSING We've reserved a block of rooms at the Franklin Hotel, 401 Chestnut St. Philadelphia for \$144 (\$72 double occupancy) per night plus hotel taxes. Reserve your room with us, pay the hotel at check-out.

MEALS Lunches are provided on Saturday and Sunday (included with tuition). Breakfast and dinner are on your own.

TRAVEL Amtrak goes to downtown Philadelphia. Airport connections are by rail or van. Parking is free at Rutgers and the lot is close to the Fine Arts Building.

FEES Tuition of \$320 covers all classes, lunches, and reception. Dance tuition \$275, Work-study tuition \$190.

Winter Weekend Workshop Registration

Apply online at amherstearlymusic.org, return this form with check, or call to pay by credit card (781) 488-3337 ~ info@amherstearlymusic.org

Name: _____ 1st Instrument/Voice _____

Address: _____ 2nd Instrument/Voice _____

Email: _____ Phone: _____

___ Full Tuition \$320 ___ Dance Tuition \$275 ___ Work-study Tuition \$190 ___ Deposit \$60

Would you like to reserve housing at the Franklin Hotel? _____

Should we match you with a roommate? yes _____ no _____

If not, do you want a room with one king-sized bed _____, or two queen-sized beds? _____?

___ Please mail me the Class Descriptions and Self Evaluation form

Policy: all but \$30.00 refundable until January 5 no refunds after January 5.

Amherst Early Music, Nathaniel Allen House
35 Webster St. West Newton, MA 02465
info@amherstearlymusic.org (781) 488-3337